



Rotalock Valves

- Applicable refrigerants: A1/A2L/A3, R410A, R32, R454B, R22, R407C, R404A, R507, R134a, R290
- Safe working pressure 625 psi / 43bar
- Ambient working temperature -22°F to 248°F / -30°C to 120°C
- Solid copper connectors on solder connections
- Valves have either single, double or no ¼ msae access port as per description
- Helium and Hydrogen leak tested
- Double plated- Tin over Zinc for extreme corrosion resistance.
- Gaskets are 100% virgin PTFE, universal fit with many other brands
- Certification: UL listed, and CE marked

Codes covered

Brand	Part no:	Description
C&D Valve	RL-RCV-1434	Rotalock Valve - 1/4 ID x 3/4 R/L Single access port
C&D Valve	RL-RCV-3858	Rotalock Valve - 3/8 ID x 5/8 R/L Single access port
C&D Valve	RL-RCV-3834	Rotalock Valve - 3/8 ID x 3/4 R/L Single access port
C&D Valve	RL-RCV-1201	Rotalock Valve - 1/2 ID x 1 R/L Single access port
C&D Valve	RL-RCV-5801	Rotalock Valve - 5/8 ID x 1 R/L Single access port
C&D Valve	RL-RCV-5814	Rotalock Valve - 5/8 ID x 1-1/4 R/L Single access port
C&D Valve	RL-RCV-7814	Rotalock Valve - 7/8 ID x 1-1/4 R/L Single access port
C&D Valve	RL-RCV-1814	Rotalock Valve - 1 1/8 ID x 1 1-1/4 R/L Single access port
C&D Valve	RL-RCV-1834	Rotalock Valve - 1-1/8 ID x 1-3/4 R/L Single access port
C&D Valve	RL-RCV-1384	Rotalock Valve - 1-3/8 ID x 1-3/4 R/L Single access port
C&D Valve	RL-RCV-5834	Rotalock Valve - 1-5/8 ID x 1-3/4 R/L Single access port
C&D Valve	RL-RCV-5824	Rotalock Valve - 1-5/8 ID x 2-1/4 R/L Single access port
C&D Valve	RL-SC-1401	Rotalock Straight Connector - 1/4 ID x 1 R/L
C&D Valve	RL-SC-3834	Rotalock Straight Connector - 3/8 ID x 3/4 R/L
C&D Valve	RL-SC-1201	Rotalock straight Connector - 1/2 ID x 1 R/L

Brand	Part no:	Description
C&D Valve	RL-SC-5801	Rotalock Straight Connector - 5/8 ID x 1 R/L
C&D Valve	RL-SC-7801	Rotalock Straight Connector - 7/8 ID x 1 R/L
C&D Valve	RL-SC-7814	Rotalock Straight Connector - 7/8 ID x 1-1/4 R/L
C&D Valve	RL-SC-1814	Rotalock Straight Connector - 1-1/8 ID x 1-1/4 R/L
C&D Valve	RL-SC-1834	Rotalock Straight Connector - 1-1/8 ID x 1-3/4 R/L
C&D Valve	RL-SC-1384	Rotalock Straight Connector - 1-3/8 ID x 1-3/4 R/L
C&D Valve	RL-EC-3834	Rotalock Elbow Connector - 3/8 ID x 3/4 R/L
C&D Valve	RL-EC-1201	Rotalock Elbow Connector - 1/2 ID x 1 R/L
C&D Valve	RL-EC-5801	Rotalock Elbow Connector - 5/8 ID x 1 R/L
C&D Valve	RL-EC-5814	Rotalock Elbow Connector 5/8 ID x 1 1/4 R/L
C&D Valve	RL-EC-3401	Rotalock Elbow Connector - 3/4D x 1 R/L
C&D Valve	RL-EC-7801	Rotalock Elbow Connector - 7/8D x 1 R/L
C&D Valve	RL-EC-7814	Rotalock Elbow Connector - 7/8 ID x 1 1/4 R/L
C&D Valve	RL-EC-1814	Rotalock Elbow Connector - 1-1/8 ID x 1-1/4 R/L
C&D Valve	RL-EC-1834	Rotalock Elbow Connector - 1-1/8 ID x 1-3/4 R/L
C&D Valve	RL-EC-5824	Rotalock Elbow connector - 1 5/8 ID x 2 1/4 R/L
C&D Valve	RL-MF-1434	Rotalock Valve 1/4 MSAE x 3/4 R/L Single access
C&D Valve	RL-MF-3834-NA	Rotalock Valve 3/8 MSAE x 3/4 R/L No access
C&D Valve	RL-MF-3834	Rotalock Valve 3/8 MSAE x 3/4 R/L Single access
C&D Valve	RL-MF-1201	Rotalock Valve 1/2" MSAE x 1" RL Single access

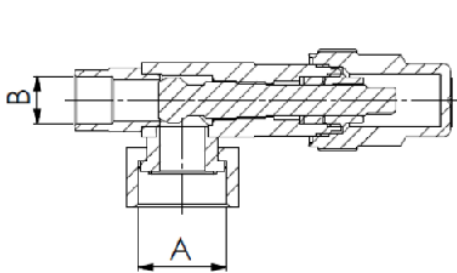
VALVE

Rotalock Accessories

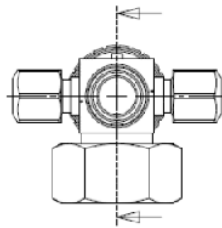
Brand A	Part no:	Description
C&D Valve	RL-GSK-100	Rotalock Teflon Gasket - suit 1 R/L
C&D Valve	RL-GSK-034	Rotalock Teflon Gasket - suit 3/4 R/L
C&D Valve	RL-GSK-114	Rotalock Teflon Gasket - suit 1-1/4 R/L
C&D Valve	RL-GSK-134	Rotalock Teflon Gasket - suit 1-3/4 R/L
C&D Valve	RL-GSK-214	Rotalock Teflon Gasket - suit 2-1/4 R/L
C&D Valve	RL-GSK-5PK	Assorted Rotalock Teflon Gaskets Pack 5
C&D Valve	CD-411-20	Plastic Rotalock Valve Cap 20 mm
C&D Valve	CD-411-30	Plastic Rotalock Valve Cap 22 mm
C&D Valve	CD-411-35	Plastic Rotalock Valve Cap 24 mm
C&D Valve	CD-411-203035	Assorted Rotalock Valve Caps Pkt 3

Technical Specifications

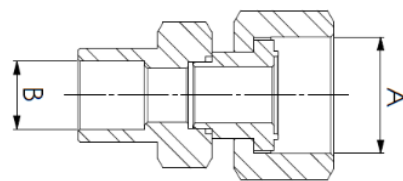
Rotalock Nut Torque Values	Nut size	Ft/Lbs	Nm
	3/4"	20	27
	1"	25	34
	1 1/4"	30	41
	1 3/4"	40	54
	2 1/4"	60	81



R/L Valve Dual Access



Straight R/L Connector



Elbow R/L Connector

A = R/L nut, size is measured across the nut flats

B = Connection ID or OD as per description

Installation notes

- Rotalock valves should be installed using industry best practice procedures
- A wet rag should be used around the valve body and connection tubes during solder installation to avoid damage to the internals.
- Silos 15% is recommended for all solder connections.
- Rotalock valves should be installed into pipework in a way that no mechanical stress is placed on the valve tubes.
- The valve tubes should not be bent or altered.
- A new gasket should be used every time a valve is installed.

C&D Valve
 201 NW 67th Street
 Oklahoma City
 OK 7311
 USA

Aspen Pumps
 Apex Way
 Hailsham
 East Sussex BN27 3WA
 UK

Aspen Pumps Asia Pacific
 8 Waddikee Road
 Lonsdale
 SA 5160
 Australia